

simply
C U S T O M
by OCEANCO

introducing
simplycustom
by **oceanco**



Creating a custom yacht should be one of the most enjoyable experiences imaginable. It should enrich your life, inspire and energize you.

The execution of a conventional fully-custom yacht build can be time consuming. Which is why we have launched a new way to build your custom yacht that guarantees Oceanco's outstanding pedigree while streamlining the process for you, the owner. Simply spend time making decisions on what matters most to you, and leave the rest to the experts.

Available from 80m (262ft) in length, the technical foundation of Simply Custom delivers the flexibility to include what most excites and inspires you, alongside the exceptional technical standards and collaborative approach for which Oceanco is renowned. We take care of the details, so you can focus on the fun.

technical foundation



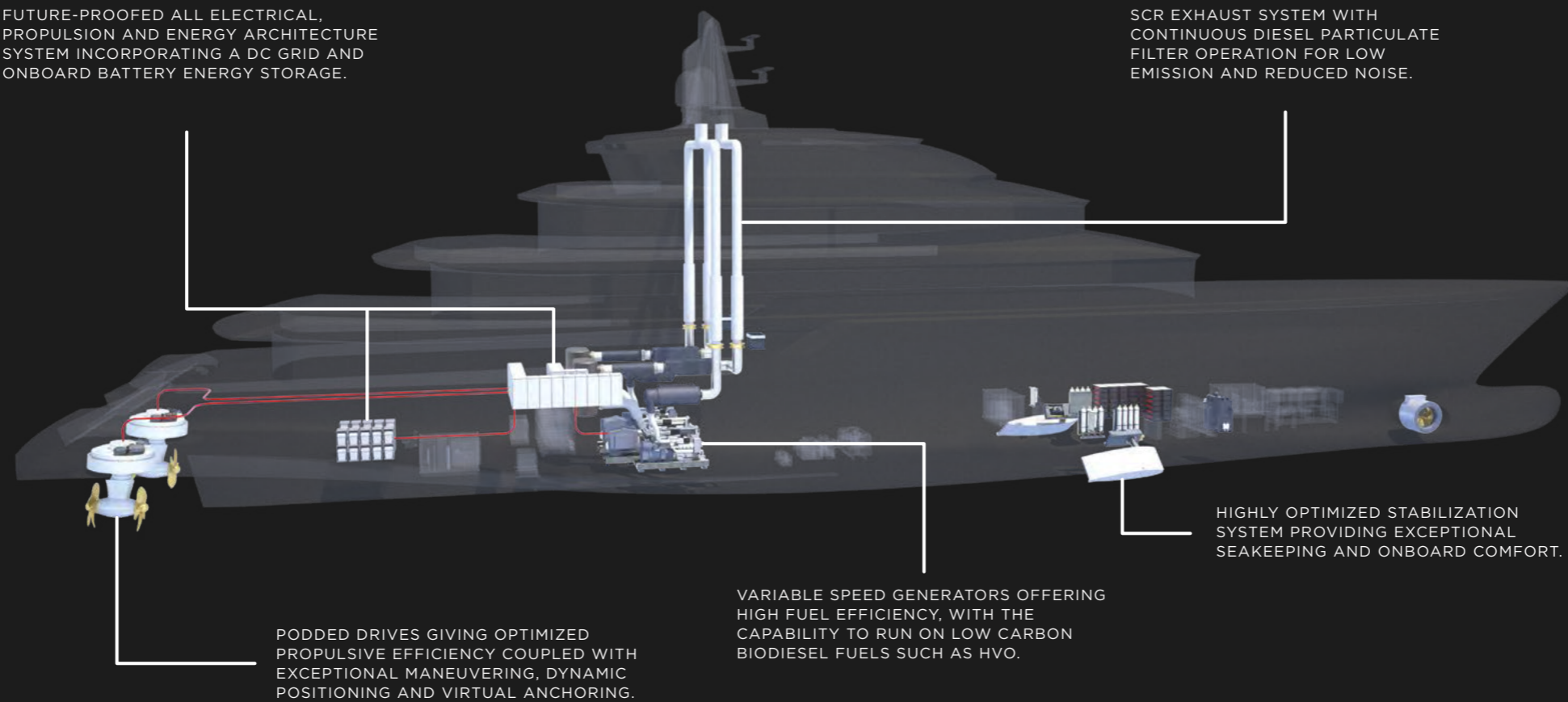
The Simply Custom technical foundation is engineered to provide world-renowned designers with a canvas upon which to create your characteristically stunning Oceanco yacht.

Delivering the ultimate onboard experience through proven technology while also benefiting from the uniquely collaborative Oceanco Co-maker approach, the Simply Custom technical foundation features a state-of-the-art, all-electrical propulsion and energy architecture system. Optimized to the most demanding operating profiles, it ensures your yacht has the right foundations to deliver high levels of operational capability and redundancy. And thanks to Oceanco's exceptional noise, vibration and seakeeping standards, you will enjoy guaranteed comfort onboard.

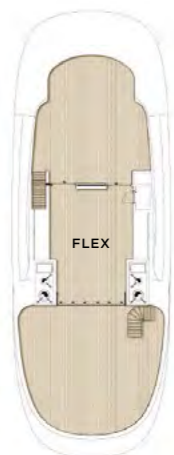
- FROM LENGTH OVERALL OF 80M (262FT) AND GT RANGE OF APPROXIMATELY 2,500-2,700GT
- HIGHLY OPTIMIZED AND EFFICIENT NEXT-GENERATION HULL DESIGN DEVELOPED BY LATERAL NAVAL ARCHITECTS
- FUTURE-PROOF, ALL-ELECTRICAL PROPULSION AND ENERGY ARCHITECTURE SYSTEM INCORPORATING A DC GRID AND ONBOARD BATTERY ENERGY STORAGE
- VARIABLE SPEED GENERATORS OFFERING HIGH FUEL EFFICIENCY, WITH THE CAPABILITY TO RUN ON LOW-CARBON BIODIESEL FUELS SUCH AS HVO
- HIGHLY OPTIMIZED STABILIZATION SYSTEM PROVIDING EXCEPTIONAL SEAKEEPING AND ONBOARD COMFORT
- PODDED DRIVES FOR OPTIMIZED PROPULSIVE EFFICIENCY COUPLED WITH EXCEPTIONAL MANEUVERING, DYNAMIC POSITIONING AND VIRTUAL ANCHORING
- 16.5 KNOT TOP SPEED AND 14-15 KNOT CRUISING SPEED, WITH 5,000NM RANGE AT 12-14 KNOTS
- TYPICALLY CONFIGURED WITH OWNER'S STATEROOM AND SIX GUEST SUITES, PER RED ENSIGN GROUP LARGE YACHT CODE PART A REGULATORY COMPLIANCE
- LOW EMISSION AND REDUCED NOISE THANKS TO SCR EXHAUST SYSTEM WITH CONTINUOUS DIESEL PARTICULATE FILTER OPERATION
- FORWARD HELIDECK, MAIN DECK AFT POOL, BEACH CLUB AND DEDICATED E-TOY STORAGE ROOM
- INTUITIVE CUSTOMIZATION APPROACH THAT IS SIMPLE TO UNDERSTAND AND IMPLEMENT, OFFERING SOLUTIONS TAILORED TO YOUR LIFESTYLE NEEDS AND YACHTING PRIORITIES. THESE INCLUDE BUT ARE NOT LIMITED TO:
 - WATERSPORTS AND DIVING PACKAGES
 - ENTERTAINMENT PACKAGE INCLUDING STATE-OF-THE-ART AV, IT AND LIGHTING INSTALLATION
 - ENHANCED SUSTAINABILITY VIA SMART-ECO PACKAGE
- REDUCED LEAD TIME FOR TECHNICAL DEVELOPMENT RESULTING IN A FASTER DELIVERY

FUTURE-PROOFED ALL ELECTRICAL,
PROPULSION AND ENERGY ARCHITECTURE
SYSTEM INCORPORATING A DC GRID AND
ONBOARD BATTERY ENERGY STORAGE.

SCR EXHAUST SYSTEM WITH
CONTINUOUS DIESEL PARTICULATE
FILTER OPERATION FOR LOW
EMISSION AND REDUCED NOISE.



technical foundation



SUN
DECK



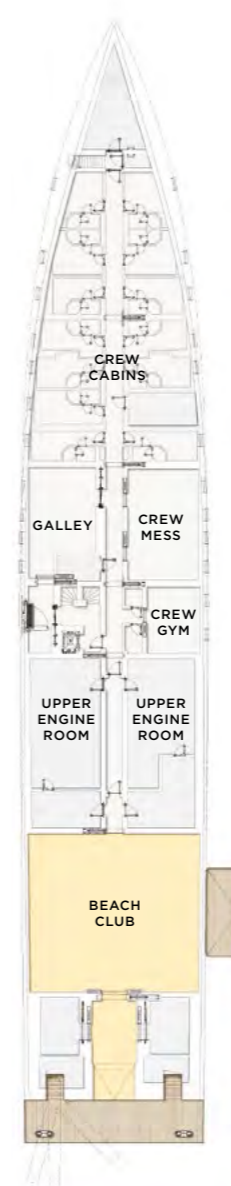
BRIDGE
DECK



UPPER
DECK



MAIN
DECK



LOWER
DECK



TANK
DECK



our newbuild *approach*



DIFFERENT IS IN OUR DNA

You could say that delivering industry firsts is Oceanco's calling card. Since our inception, we have been privileged to collaborate with nonconformist owners and similarly ambitious partners and Co-makers, challenging the status quo.

We consistently deliver ground-breaking yachts that set new standards in design, efficiency, innovation and technical achievement. Our fleet is testament to this approach, with trend-setting projects such as *Alfa Nero*, *Tranquility*, *Aquijo*, *Black Pearl*, *Bravo Eugenia* and *Koru* exemplifying Oceanco's ethos.

We embrace meaningful innovation that is aligned with progressive thinking about how we live today and the impact on our planet, working with trailblazers from inside and outside the industry. Put simply, Oceanco builds tomorrow's yachts, today.



our newbuild approach



BUILDING FOR A BETTER FUTURE

For Oceanco, innovation and sustainability are at the core of who we are and what we do, meaning we can build a better future for generations to come. We believe that building yachts that are capable of operating more sustainably will become the norm in the coming years.

In order to build yachts that will stand the test of time, we are proactive when it comes to keeping abreast of the latest design developments and technologies relating to sustainability, often from outside the industry. Our Project Development team and our technical partners like Lateral always have this at the front of their minds, and will include sustainability as part of the earliest conversations we have with you and your team.

And we continue to invest in ways that can make our own operations more sustainable. Oceanco has pledged to more than halve our impact on the environment compared to the benchmark by 2030, aiming for 100% of our electricity usage to be supplied by renewable energy sources.

FACILITIES AS CUTTING EDGE AS OUR YACHTS

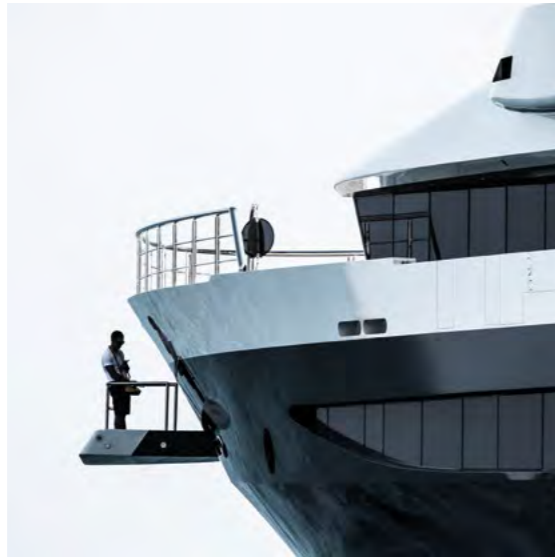
To build next-generation yachts, we need state-of-the-art facilities that are in line with our progressive approach to design, innovation and sustainability. Which is why Oceanco continues to invest in impactful emerging technologies while also increasing capabilities at our various yacht building facilities.



GUILAUME PELISSON

Our eco-efficient, state of the art headquarters in Alblasterdam has the capacity to work on multiple yachts of up to 150m at the same time, both for new builds and Life Cycle Support. There is a marina for in-water service jobs, a cutting edge dry dock and a Syncrolift, as well as access restricted zones for safety and confidentiality. The main building accommodates 2,800sqm of office space across six floors, alongside 13,000sqm of workshops adjacent to the dock. From here, yachts have direct access to the North Sea.

Oceanco's 28-acre site in Zwijndrecht is integral to our long-term initiative for growth. As well as expanding capacity for Life Cycle Support work and centralizing the Phase 1 construction of our new builds, it is evolving into a yacht hub and brain park for innovation and training. Across 114,000sqm there are separate construction and outfitting facilities, a piping shop, paint facilities, sandblasting facilities, offices and conference rooms including those used by owner's teams, yacht crews and our Co-maker partners. And this is also where our steel hulls are fabricated in-house by Mercury Yacht Construction, an Oceanco company.



lifecycle *support*

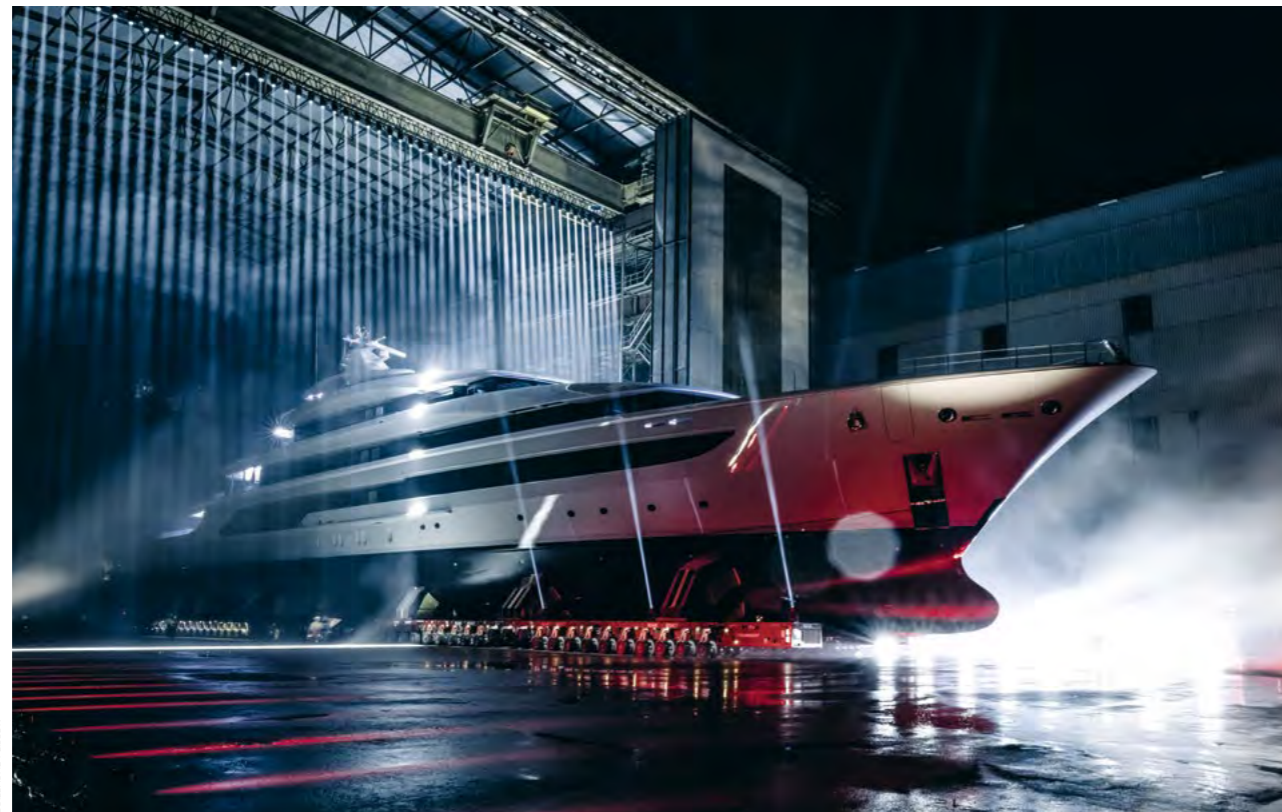


TAKING CARE OF YOUR YACHT FOR THE DURATION

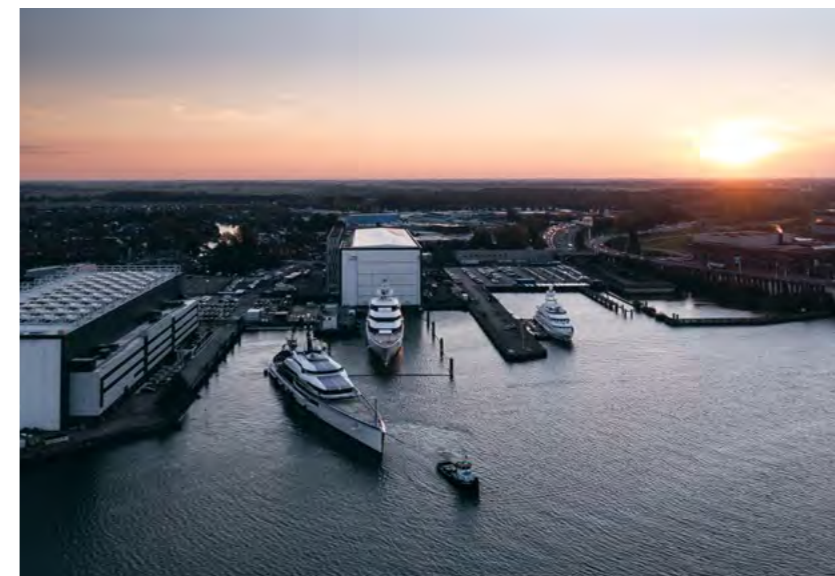
Every yacht deserves the highest quality care, not just when she is built but throughout her lifetime. We call this Life Cycle Support.

Life Cycle Support guarantees the same standard of expertise and integrity that Oceanco's clients receive for our construction projects, with a full service approach that is delivered at our state of the art facilities. The Life Cycle Support project managers and teams work alongside Oceanco's comprehensive network of key suppliers and Co-maker partners to reliably and efficiently deliver a wide range of services on time and on budget.

With advanced environmental and security controls, our outfitting facilities uphold the highest standards to assure the safety and privacy of crews, yachts and workers.



GUILLAUME PUSON



lifecycle *support*



A FULL-SERVICE SOLUTION YEAR IN, YEAR OUT

From routine refit and maintenance management to full scale upgrades and lifetime extensions, we offer assurance that a yacht will uphold the highest quality standards, whether she is part of our fleet or new to us. With many outstanding key suppliers and Co-makers based at or near Oceanco, our clients have direct access to a vast pool of talent onsite. Both at our own facilities and through deployment of rapid response teams anytime, anywhere in the world, Oceanco Life Cycle Support has our clients covered.

A LIFETIME OF EVOLUTION

With experience on some of the most challenging and innovative yacht construction projects in the world, we are not fazed by major upgrades or lifetime extensions. Our construction facilities are able to handle significant structural and technical works, so every yacht can continue to evolve and modernize as new technologies come on stream - and even become more sustainable in the process.

AN OPEN BOOK WITH NO UNEXPECTED 'EXTRAS'

We stand for reliability, responsibility and transparency. We are open and upfront about costs before a project starts, with many services falling under our monthly facilities fee, so there are no long lists of unexpected 'extras' when it comes to invoicing time.



Oceanco *news*



EVOLUTION OF AN ICON

Completed in early 2023, the transformation of *H* is one for the history books. Oceanco relished the opportunity to revisit this iconic yacht while tackling work of a novel scale and nature, recreating her to face the future as a new, contemporary vessel.

H was brought in line with modern standards in terms of technology, safety, capability and sustainability, including the rigorous IMO Tier III. The A Group acted as the independent owner's representative for the project. She now boasts a modern aesthetic, including a completely new superstructure and a fresh interior by Reymond Langton Design.



PHOTOS: GUILLAUME FLISSON

The results show the world – particularly owners of existing yachts – that there is an alternative way to create an almost completely new yacht, with the benefit of reduced wait, thanks to less time being demanded for engineering and hull construction.

The novel approach offers a win-win solution, as Oceanco Marketing Director Paris Baloumis explains: “It is our ambition that this landmark project will inspire owners of existing yachts to benefit from the gift of time while adding value to their ownership experience as well as the planet. Through this approach, today’s icons have the potential to become the new faces of tomorrow.”



AEOLUS IS SHAPED BY THE WINDS OF CHANGE

At this year's Dubai International Boat Show, Oceanco presented Aeolus. As the newest yacht to align with our Oceanco NXT initiative, she is in tune with evolving perspectives on the environment and lifestyle.

Striking an equilibrium between feminine curves and masculine presence, Aeolus's Giles Taylor-designed exterior has complementary interiors from Njord by Bergman Design House. Her decks are arranged in pod-like formations, with an owner's private oasis at the pinnacle.

Aeolus's creators have imagined a way to live better while also respecting the oceans. Her Njord interior has a strong language of introducing fully sustainable and traceable materials - including biomaterials - at her core.

Oceanco also partnered with ONE to create Aeolus Aura. Harnessing immersive technology and computer learning, this novel, life-enhancing integrated support system evolves based on an owner's needs and preferences.

In terms of sustainable technology, alongside technical partners ABB and MTU, Oceanco and Lateral Naval Architects have developed a unique Energy Transition Platform - or ETP - that can be implemented on Aeolus as a three-phase adaptable architecture to enable a future-proofed pathway to Net Zero.

"The collaboration and innovation resulting in the Aeolus design has been remarkable," comments CEO Marcel Onkenhout. "To build the yachts of tomorrow, we need to leave behind the preconceptions of yesterday. With Aeolus, I think we have achieved that."



NEW BEGINNINGS FOR KORU, SEVEN SEAS AND Y722

Oceanco's two latest yachts have been delivered to their owners: 125m three-masted schooner *Koru* and 109m motoryacht *Seven Seas*. While 111m Y722 progresses ever closer to her delivery. [↗](#)



✎ *Koru's* name is taken from the Maori for “new beginnings”, and she has certainly lived up to it with respect to her colossal scale and technical capabilities. Not only is she largest yacht built by Oceanco to date, she is the world's largest sailing yacht and the longest yacht to be built in The Netherlands, reinforcing Oceanco's reputation for industry firsts.

Displaying a beautifully proportioned profile, *Seven Seas* is a spectacular example of graceful contemporary design. The result of a creative collaboration between Sinot Yacht Architecture & Design and Molly Isaksen Interiors, *Seven Seas* underwent an extensive optimization process, resulting in her outstanding performance and seakeeping credentials. She is also the first LY3-compliant yacht to feature a Marine Evacuation System.

In June, Y722 was transported from Oceanco's first-phase construction facilities in Zwijndrecht to our Alblasterdam outfitting facilities. From here, the remaining work will be carried out before she undertakes sea trials and commissioning in 2025. Designed by Oceanco and Espen Øino International with interiors from Mark Berryman Design, Y722 will join a select fleet of privately-owned vessels engaged in scientific research, discovery, and exploration.

LIFE CYCLE SUPPORT UPGRADES

In June, Oceanco completed a six-week Life Cycle Support refit period on 59m *Treehouse* (ex-*Helios*). Her new owners wished to make some technical upgrades and aesthetic refinements onboard. These focused on her propeller shaft seals and generators, as well as new paintwork providing a fresh, contemporary look.

In the same month, 91.5m *Tranquility* returned to Oceanco for a number of upgrades to ensure she remains at the top of her game for years to come. As one of the builder's prominent ground-breaking projects, she was the first yacht to be built to the Passenger Yacht Code when she was delivered as *Equanimity*.

A FULLY IMMERSIVE EXPERIENCE

This summer, Oceanco opened its first experience room at our Alblasterdam HQ, providing clients and industry professionals an opportunity to see a host of our collaborations and advancements together in one place. From displays of sustainable materials and biomaterials for interiors to advancements in yacht technology and energy systems, there is plenty to take in and inspire your next yacht.



index

INTRODUCTION
TECHNICAL FOUNDATION



the collection

INTRODUCTION
BOZCA LIMITLESS DESIGN // AURAI
ESPEN ØINO INTERNATIONAL // CLARITY
H2 YACHT DESIGN // STORM & PORTOFINO
HARRISON EIDSGAARD // VEGA
HOT LAB // SUPERLEGGERA 80
LOBANOV DESIGN // INTERSTELLAR
NUVOLARI LENARD // DOMINO
OCEANCO // PEGASUS
PASCOLI INTERNATIONAL // CARINAE
SINOT // SAUVAGE
SORGIOVANNI DESIGN // SS80
TAYLOR DESIGN // AEOLUS 80
TEAM FOR DESIGN - ENRICO GOBBI // SILVER OCEAN
THE A GROUP // PROTEUS
THE TOUCH STUDIO // DUNES
VALLICELLI DESIGN // ANI
WINCH DESIGN // REVERIE

interior inspiration

INTRODUCTION
DASHA MORANOVA DESIGNS
NJORD BY BERGMAN DESIGN HOUSE
NUVOLARI LENARD
STUDIO LAURA SESSA
ZURETTI DESIGN

about oceanco

OUR NEW BUILD APPROACH
LIFE CYCLE SUPPORT

No rights can be derived from any part of the information in this brochure.
This document has copyright protection. ©Oceanco September 2023.

Production by Coconut Creative // Design by Supercharger Design Co.
Beach image by Agata Hepy Puspitasari

BUILT BY
oceAnco